



ARGENTIUM<sup>®</sup>  
SILVER GUILD

## Make It Argentium!

### Oval Stone-Set Cufflinks



#### Supplied in the Kit

- Oval bezel cups: 10mm x 14mm (x2)
- Oval gemstone cabochons: 10mm x 14mm (x2)  
*(choice of Black Onyx, Tiger's Eye & Smokey Quartz)*
- Jump rings: 1.2mm wire x 3.5mm inside diameter (x4)
- Oval blanks: 15mm x 18.8mm (x2)
- Round rod: 3mm diameter x 40mm length (x1)
- Oval belcher chain: 5.9mm width x 50mm length (x1)
- Certificate of authenticity card: (x1)
- Pillow card gift box: (x1)

#### Tools for the job

- Charcoal block with spinner tray
- Heatproof pad
- Torch
- Rotary tool including abrasive & polishing attachments *(or files and abrasive papers)*
- Tweezers & chain nose pliers
- Bezel pusher (or the back of a spoon)
- Easy solder paste (or Easy solder & flux)
- Piercing saw

#### Step 1



##### Soldering links onto oval blanks

1. Cut jump ring in half using a piercing saw.
2. File ends flat so they sit flush onto the blank.
3. Emery blanks to clean and apply Easy paste solder (or Easy solder with flux) to components.
4. Heat until solder has melted.
5. Wait until red-hot glow has disappeared, before touching, pickling, rinsing and drying.

#### Step 2



##### Soldering bezel cups onto blanks

1. Emery blanks and bezel cups to clean and apply Easy paste solder (or Easy solder with flux).
2. Heat until solder has melted. *(Focus heat on the blank to prevent the bezel cup overheating).*
3. Wait until red-hot glow has disappeared, before touching, quenching and pickling.

**Tip:** Use a crack in your charcoal block to allow the blank to sit flat whilst soldering.

## Step 3



### Cleaning up and polishing the soldered pieces

1. Use your rotary tool and attachments to abrade away imperfections and polish edges.
2. You can also use the rotary tool to add surface texture to the blank.

**Tip:** If you do not have a rotary tool, you can use files and emery papers to clean up your piece and create a satin finish.

## Step 4



### Fitting the gemstones

1. Fit the stone into the bezel cup.
2. Using your bezel pusher, carefully work your way around the bezel cup - pushing over the top edge to secure the stone in place.
3. Use your rotary tool to polish the bezel edges.

**Tip.** If you do not have a bezel pusher you can use the curved side of a spoon.

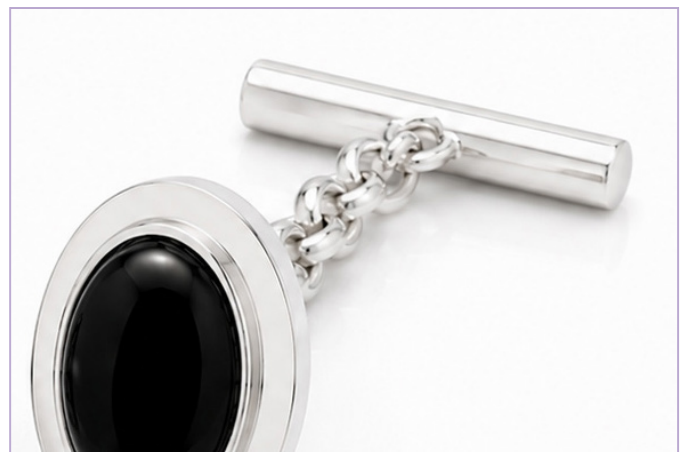
## Step 5



### Attaching a jump ring and chain to each cufflink

1. Cut the chain into two equal lengths of approximately 20mm.
2. Attach a jump ring to the link and then hook on one end of the chain.
3. Close the jump ring using your chain-nose pliers.

## Step 6



### Fitting the bar

1. Cut the 3mm rod into two equal lengths of approximately 20mm and file/abrade the ends flat.
2. Cut a jump ring in half (as in Step 1) and solder this onto the bar. Wait until the piece has cooled then pickle, rinse, dry and polish.
3. Take the remaining jump ring and attach this to the link, then hook the end of the chain to the jump ring.
4. Close the jump ring.
5. Apply finishing touches.

*Personalise your cufflinks by adding surface decoration using wires, granulation and textures.*